

MiCAT

Mitutoyo Intelligent Computer Aided Technology

the standard in world
metrology software

FORM

MANUAL No.99MBB435A9
SERIES No. 178

Surftest SJ-210/310/410
USB Communication
Ver. 5.007A (English)
(Complimentary)

Surface Roughness Tester
SJ-210/310/410

User's Manual

Read this Manual thoroughly before operating the instrument.
After reading, retain it close at hand for future reference.

Mitutoyo

About this software

Surftest SJ-210/310/410 USB Communication
Surface Roughness Tester
Quick inspection certificate generation program
Ver. 5.007A (English Edition)
(Complimentary)

Copyright © 2016 Mitutoyo Corporation. All rights reserved.

About this user's manual

Mitutoyo assumes no liability to any party for any loss or damage, direct or indirect,
Caused by use of this software not conforming to this manual.
Information in this document is subject to change without notice.
Copyright © 2016 Mitutoyo Corporation. All rights reserved.

Notes on Export Regulations

You shall agree to commit no act which would, direct or indirect, violate any law or regulation of U.S., Japan or your country, or any other international treaty, relating to the export or re-export of any commodities, software or technical data. If you would like to export or re-export goods, technologies or software concerning this product, be sure to obtain written consent of Mitutoyo Corporation in advance.

Software License Agreement

PLEASE READ THE FOLLOWING CAREFULLY BEFORE USE.

When you agree to comply with this Software License Agreement, you may use the These Mitutoyo software product named SJ Series.

Make sure you read all of the terms and conditions of this Software License Agreement carefully before installing or using the software product that is distributed with this Agreement.

----- SOFTWARE LICENSE AGREEMENT -----

Mitutoyo Corporation grants to you a non-transferable and non-exclusive license to use of this software program(s), program disk(s), dongle(s) and manual(s) distributed with this Software License Agreement (collectively, hereinafter referred to as the "Software Product"), under the following terms and conditions.

1. License

Mitutoyo Corporation distributes this Software Product free of charge as part of the user service.

You are granted to use the Software Product, when you agree to comply with all of the terms of this Software License Agreement (hereinafter referred to as the "License Agreement").

Installation or use of the Software Product constitutes your acceptance of all of the terms of this License Agreement and your agreement to be bound by and become a party to this License Agreement. If you do not agree with all the terms of this License Agreement, you may not use the Software Product.

This license hereunder allows you to use the software and install on any computer, provided that you may use the Software in order to apply it only to the Mitutoyo products.

Mitutoyo Corporation may immediately terminate this License Agreement, if you fail to comply with any of terms of this License Agreement. In such a case, you must not use any of the Software Product and must return all of the Software Product to Mitutoyo Corporation, and must destroy all copies of the Software Product.

The Software Product is licensed, not given, to you for use only under the terms of this License Agreement. You have no right to the Software Product except as expressly granted in this License Agreement. All rights not expressly granted herein are reserved by Mitutoyo Corporation.

2. Copy restrictions

Except as expressly granted under this License Agreement, you may not copy any of the Software Product.

You may not assign, rent, lease, sublicense, lend, distribute or otherwise transfer this License Agreement, the rights granted under this License Agreement, the Software Product, or other items contained in this software package, to a third party without the prior written consent of Mitutoyo Corporation.

You may make copy of this Software Product to use only for you. You should make a complete copy consisting of all of the Software Product files, including this document file.

You may not reverse engineer, disassemble, decompile or modify the Software Product in whole or in part.

3. Limited warranty

You assume all responsibility for all results arising out of your selecting, purchasing, installing or using the Software Product in order to achieve your intended results.

4. Disclaimer

The Software Product is provided "As Is" and without any warranties of any kind, either expressed or implied, including merchantability, fitness for a particular purpose.

In no event shall Mitutoyo Corporation be liable to you, any person or any entity for any direct, indirect, incidental, special or consequential damages whatsoever (including, without limitation, damages for loss of business profits, business interruption, loss of business information, or any other pecuniary loss) arising of the use of or inability to use the Software Product, however caused, regardless of the theory of liability (contract, tort or otherwise) and even if Mitutoyo Corporation has been advised of the possibility of such damages.

5. Governing law and Jurisdiction

This License Agreement shall be interpreted and construed in accordance with the laws of Japan, without regard to conflicts of law principles. You agree to submit to the exclusive jurisdiction of the courts in Tokyo in Japan with respect to any dispute, controversy or claim arising out of, relating to or in connection with this License Agreement or the use of or inability to use the Software Product.

1

INSTALLATION

This section describes how to install.

Execute the setup.exe file after downloading. To start setup of the application, perform installation according to guidance.

However, if the old version has been installed, be sure to execute the procedure in "5. UNINSTALLATION", and then perform installation.

After installation has been completed, turn on the power to the control unit and connect the PC and control unit with the USB cable (Parts No.12AAL068 for SJ-210 or A:miniB type as a commercial product. Parts No.12AAD510 for SJ-310 and SJ-410 or AB type as a commercial product).

NOTE

This software supports SJ-210/310/410.

This Software requires Microsoft .NET Framework 4.0, the C++ runtime library, and Microsoft Excel in order to operate.

< Microsoft .NET Framework 4.0, the C++ runtime library >

If they have not yet been installed, the installation guidance message is displayed immediately after the setup.exe file is executed. To install, follow the messages displayed on the screen. Please note that installation of Microsoft .NET Framework 4.0 and the C++ runtime library is at the customer's risk.

< Microsoft Excel >

Please perform the installation on your own.

Installing the USB connection driver

Windows10: Follow the procedures below to install the USB connection driver manually. Click [Start] → Click [Setting] → Click [Devices] → Click [Devices manager] → Select [SJ-210/310/410] → Click [General] tab → Click [Update Driver] → Select [Browse my computer for driver software] → Click [Browse] to specify [DLL¥SJ¥inf] folder → Click [Next] and the installation is started.

Windows8: When [Device driver software was not successfully installed] is displayed, follow the procedures below to install the USB connection driver manually. Click [Start] → [Charm] → Click[Search] → Click[Control Panel] → Click [Devices and Printers] → Select [SJ-210/310/410] → Click [Hardware] tab → Click [Properties] → Click [Change setting] → Click [Update Driver] → Select [Browse my computer for driver software] → Click [Browse] to specify [DLL¥SJ¥inf] folder → Click [Ok] → Click [Next] → Select [Install] and the installation is started.

If it is unable to install by the above method, follow the procedures below:

Click [start] → [Charm] → Click[Search] → Click[Control Panel] → Click [Devices and Printers] → Select [SJ210/310/410] → Click [Hardware] tab → Click [Properties] → Click [Change setting] → Click [Update Driver] → Select [Browse my computer for driver software] → Select [Let me pick from a list of device drivers on my computer] → Select [Show All Device] → Click [Next] → Select [Have Disk] → Click [Browse] to specify [DLL¥SJ¥inf] folder → Select [SJ-210/310/410.inf] → Click[Open] → Select [SJ-210/310/410] from [Show compatible hardware] → Click [Next] → Select [Install] and the installation is started.

Windows7: When [Device driver software was not successfully installed] is displayed, follow the procedures below to install the USB connection driver manually. Click [Start] → Click [Devices and Printers] → Select [SJ-210/310/410] → Click [Hardware] tab → Click [Properties] → Click [Change setting] → Click [Update Driver] → Select [Browse my computer for driver software] → Click [Browse] to specify [DLL¥SJ¥inf] folder → Click [Ok] → Click [Next] → Select [Install] and the installation is started.

If it is unable to install by the above method, follow the procedures below:

Click [start] → Select [Devices and Printers] → Select [SJ210/310/410] → Click [Hardware] tab → Click [Properties] → Click [Change setting] → Click [Update Driver] → Select [Browse my computer for driver software] → Select [Let me pick from a list of device drivers on my computer] → Select [Show All Device] → Click [Next] → Select [Have Disk] → Click [Browse] to specify [DLL¥SJ¥inf] folder → Select [SJ-210/310/410.inf] → Click[Open] → Select [SJ-210/310/410] from [Show compatible hardware] → Click [Next] → Select [Install] and the installation is started.

Windows Vista: When [Found New Hardware] is displayed, follow the procedures below to install the USB connection driver. Select [Locate and install driver software] → Select [I don't have the disc. Show me other options] → Select [Browse my computer for driver software] → Click [Browse] to specify [DLL¥SJ¥inf] folder → Click [Ok] → Click [Next] → Select [Install] and the installation is started.

Windows XP: When [Found New Hardware Wizard] is displayed, follow the procedures below to install the USB connection driver. Select [Install from a list or specific location] → Click [Next] → Select [Search for the best driver in these locations] and check [Include this location in the search] → Click [Browse] to specify [DLL¥SJ¥inf] folder → Click [Ok] → Click [Next] and the installation is started.

To start this program, Excel supplied from Microsoft Corporation (US) needs to have been installed. For information about the operating environment, refer to "6. OPERATING ENVIRONMENT AND OTHERS"

NOTE	[SJ-210]	The USB cable (Parts No.12AAL068) is not a standard accessory. It needs a separate order. A:miniB type for commercial product.
	[SJ-310/410]	The USB cable (Parts No.12AAD510) is not a standard accessory. It needs a separate order. AB type for commercial product

2

START-UP

This section describes how to start .

- (1) Start SJ-Communication-tool from the Surftest SJ USB Tools menu in the Windows Start Programs. If the PC and control unit are properly connected at this time, authentication of the connection is automatically performed and the Measurement Data Read screen is displayed.
- (2) When the application is used for the first time, it is necessary to perform authentication of the connection between the PC and control unit. If authentication of the connection is not complete, it is not possible to use the application independently with the control unit unconnected to the PC.

CAUTION: If authentication of the connection is not complete, message “Please confirm the connection with SJ controller.” is displayed.

- (3) If the control unit is not connected, the buttons related to the control unit are disabled.
- (4) If the buttons related to the control unit are disabled even with the control unit connected, there is some anomaly in communication. If this is the case, quit the application once and then restart it after checking the connection with the control unit.
- (5) If the software is started with the control unit connected, language will be the same as the one displayed in the control unit.

NOTE

Please connect any one set of SJ-210/310/410 to a personal computer.
Can not be used in multiple units.

Files required for creating the inspection certificate are saved below: “C:¥Mitutoyo
Surftest¥SJ-Tools”

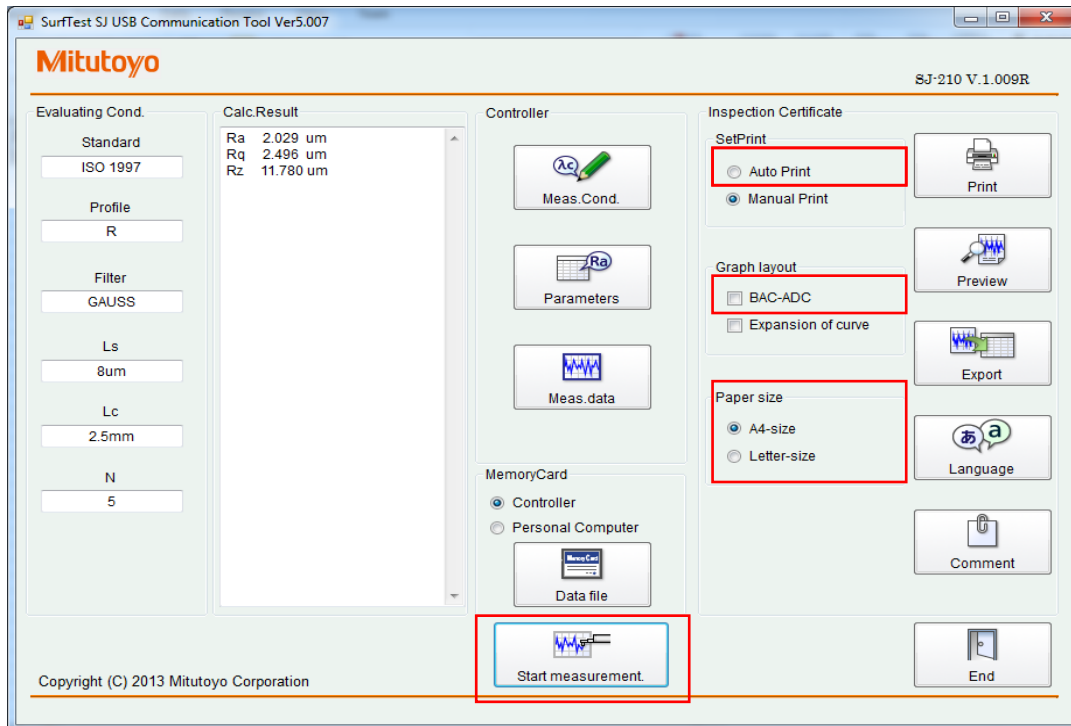
3

GENERATING AN INSPECTION CERTIFICATE

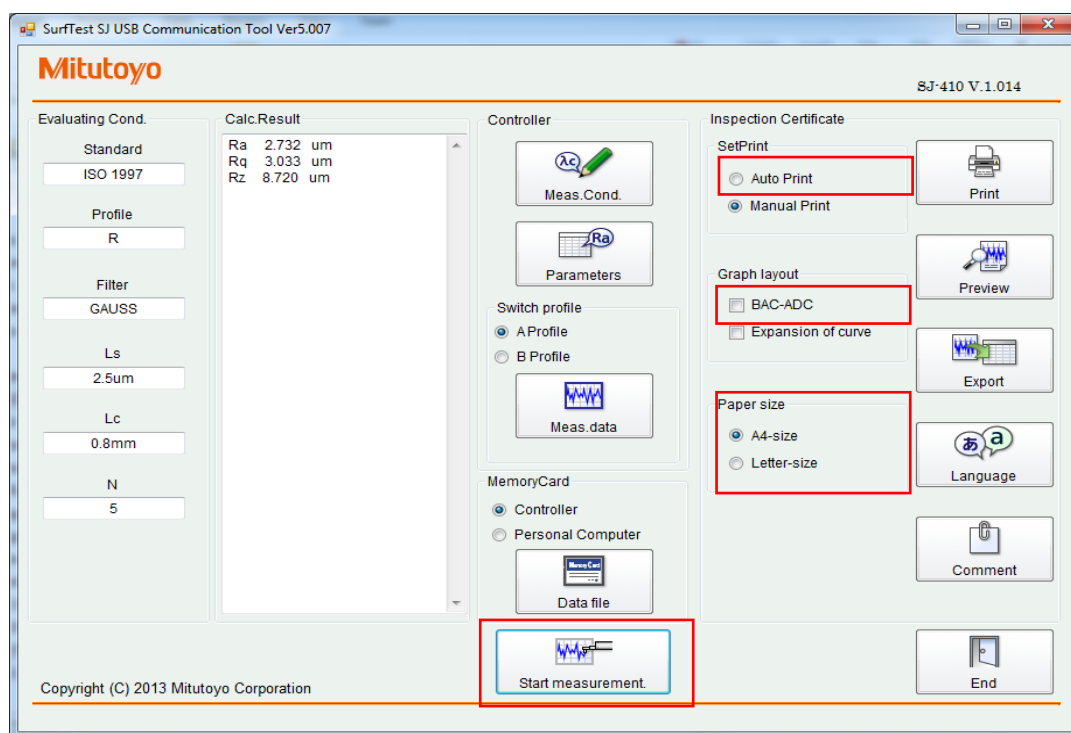
This section describes how to create inspection certificate.

- (1) This program can generate a simplified inspection certificate based on calculation results and evaluation profile data.
- (2) Click SJ-Communication-Tool from the SurfTest SJ USB Tools menu in the Windows Start Programs to start SurfTest SJ Communication Tool.
- (3) Select [Automatic Print] from the Print Method box.
- (4) Select the check box of [BAC-ADC Display] in the Graph Layout box.
- (5) Select either A4-size or letter-size print sheet.
- (6) Following steps can be performed automatically by clicking [Start measurement]:
Performs measurement → Loads data from the control unit → Creates an inspection certificate → Prints an inspection certificate
- (7) The evaluation conditions and calculation results of loaded data can be also confirmed on the screen of SurfTest SJ Communication Tool.

•SJ-210



•SJ-310/410



NOTE In the inspection certificate, 24 parameters can be displayed at maximum.

4

DESCRIPTION OF EACH FUNCTION

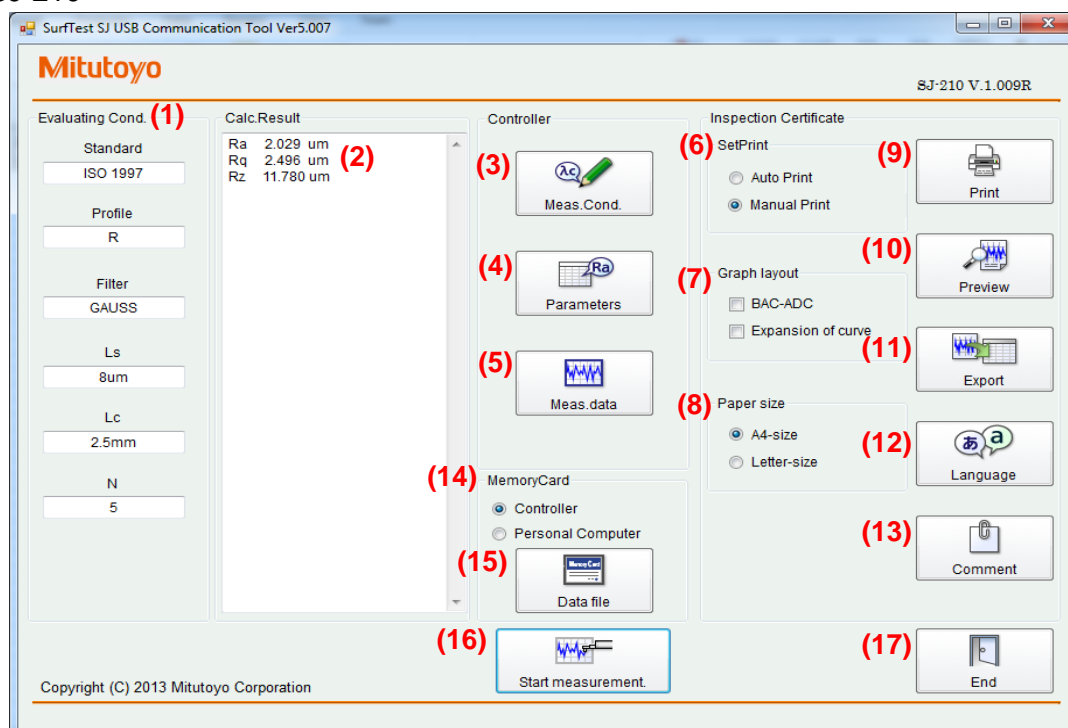
This section describes each function.

4-1. Home Screen

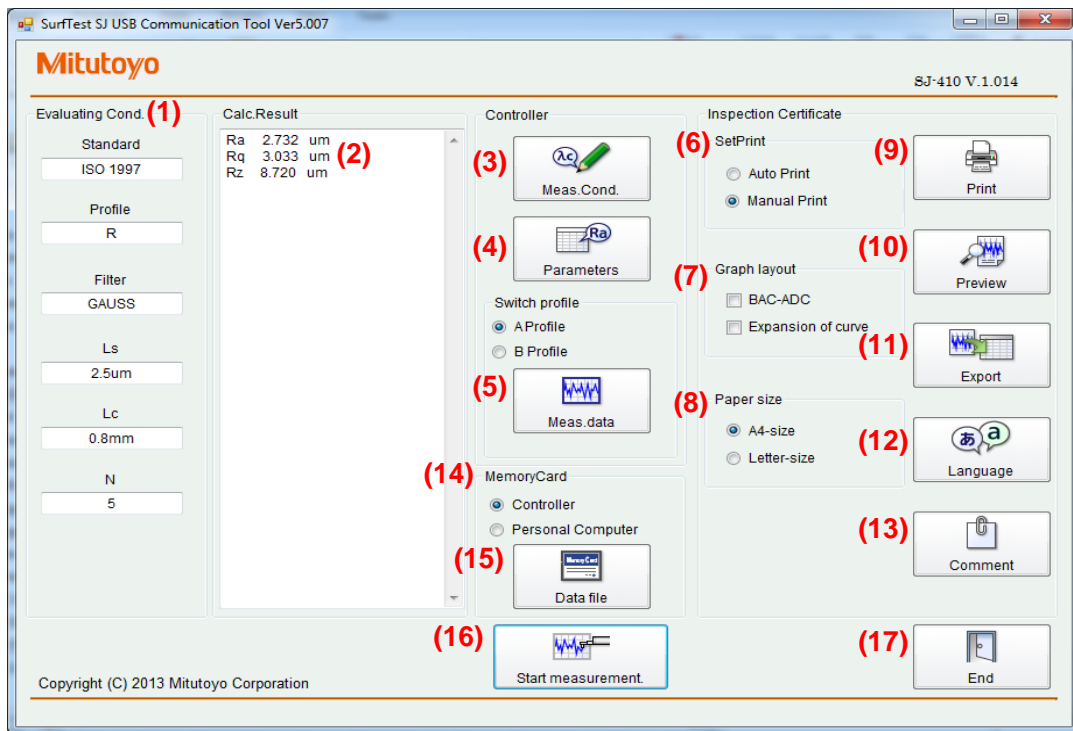
- | | |
|---------------------------------|---|
| (1) [Evaluation Condition] | Displays evaluation conditions such as standard and profile of loaded data. |
| (2) [Calculation Result] | Displays calculation results of loaded data. |
| (3) [Measurement Conditions] | Opens the measurement condition setting screen
(Refer to 4-2. Measurement condition screen.) |
| (4) [Parameter] | Opens the parameter screen.
(Refer to 4-3. Parameter customize screen) |
| (5) [Measurement Data] | Loads the measurement conditions, calculation results,
and evaluation profile data of a profile selected from the control
unit. In SJ-310/410, A,B profile can be selected. |
| (6) [Print Method] | |
| Auto Print : | Automatically loads data from the control unit, generates and
prints an inspection certificate. |
| Manual Print : | Generates and prints an inspection certificate
using already loaded data. |
| (7) [Graph Layout] | |
| BAC-ADC Display: | Displays a BAC-ADC graph on an inspection certificate. |
| Evaluation Profile Enlargement: | Displays an enlarged evaluation profile
if no BAC or ADC is displayed. |
| (8) [Paper size] | Either A4-size or letter-size print sheet can be selected. |
| (9) [Print] | Prints an inspection certificate according to a specified print
method. |
| (10) [Print Preview] | Displays the print image of an inspection certificate. During the
print preview mode, the Surftest SJ Communication Tool screen
is minimized. When the print preview mode exits, the Surftest SJ
Communication Tool screen is restored to the original size. |
| (11) [Export] | An inspection certificate can be saved as a file excluding the
Excel macro function. For details about the saving method,
refer to the Excel Operation Manual. |

- (12) [Language Selection] Allows a language displayed on an inspection certificate to be switched.
- (13) [Comment] Allows edition of a comment in an inspection certificate.
- CAUTION:** If a language is switched to another, a comment is changed to the default setting.
- (14) [Memory Card]
- Control unit: Allows data in a memory card inserted in the control unit to be loaded.
- PC: Allows SJ-210/310/410 data saved in a memory card connected to a PC or contained in a folder to be loaded.
- CAUTION:** The format of the files to be loaded among those saved in a memory card is limited to the text file format. Perform setting in order of Control Unit, Environment Setting, Memory Card, Text File, and All Data.
- (15) [Data File] Displays the data file list of SJ-210/310/410 saved in a memory card. Select a file from list and click call button.
- CAUTION:** Although Auto Print is selected in the [Print Method], it is not possible to print automatically by loading data from a memory card. To continue generation of an inspection certificate, click the [Print] button.
- (16) [Start Measurement] Performs measurement to load the measurement conditions / the calculation result / the evaluation profile data of the profile selected in the control unit
- (17) [Exit] Quits SurfTest SJ Communication Tool.

•SJ-210



•SJ-310/410



4-2. Measurement conditions Screen

- The measurement conditions such as standard, profile, and filter can be set.
- Clicks [Save] to change the Opt Length.

•SJ-210

Measurement Conditions

Standard

- ☐ JIS1982
- ☐ JIS1994
- ☐ JIS2001
- ☒ ISO1997
- ☐ ANSI
- ☐ VDA
- ☐ Free

Profile

- ☐ P
- ☒ R
- ☐ DF
- ☐ R-Motif

Filter

- ☐ 2CR75
- ☐ PC75
- ☒ GAUSS
- ☐ NONE

Lc

- ☐ 0.08
- ☐ 0.25
- ☐ 0.8
- ☒ 2.5

mm

Ls

- ☐ 2.5
- ☒ 8
- ☐ NONE

um

M-Speed

- ☐ 0.25
- ☒ 0.5
- ☐ 0.75

mm/s

N

- ☐ 1
- ☐ 2
- ☐ 3
- ☐ 4
- ☐ 5
- ☐ 6
- ☐ 7
- ☐ 8
- ☐ 9
- ☐ 10

☒ Opt Length

5.00 mm

5.00 - 16.00

Save

Motif-A

- ☐ 0.02
- ☒ 0.1
- ☐ 0.5

0.64 mm

3.20 mm

16.00 mm

5.00 - 16.00

Save

Pre/Post

- ☐ OFF
- ☒ ON

Meas.Length

15.00 mm

Eval.Length

12.50 mm

Range

- ☒ AUTO
- ☐ 360
- ☐ 100
- ☐ 25

um

Exit

•SJ-310

Measurement Conditions

Standard

- ☐ JIS1982
- ☐ JIS1994
- ☐ JIS2001
- ☒ ISO1997
- ☐ ANSI
- ☐ VDA
- ☐ Free

Profile

- ☐ P
- ☒ R
- ☐ DF
- ☐ R-Motif
- ☐ W-Motif

Filter

- ☐ 2CR75
- ☐ PC75
- ☒ GAUSS
- ☐ NONE

Lc

- ☐ 0.08
- ☐ 0.25
- ☒ 0.8
- ☐ 2.5
- ☐ 8

mm

Ls

- ☒ 2.5
- ☐ 8
- ☐ NONE

um

M-Speed

- ☐ 0.25
- ☒ 0.5
- ☐ 0.75

mm/s

Range

- ☒ AUTO
- ☐ 360
- ☐ 100
- ☐ 25

um

N

- ☐ 1
- ☐ 2
- ☐ 3
- ☐ 4
- ☐ 5
- ☐ 6
- ☐ 7
- ☐ 8
- ☐ 9
- ☐ 10

☒ Opt Length

5.00 mm

1.60 - 16.00

Save

Motif-A

- ☐ 0.02
- ☒ 0.1
- ☐ 0.5

0.64 mm

3.20 mm

16.00 mm

1.60 - 16.00

Save

Motif-B

- ☐ 0.1
- ☒ 0.5
- ☐ 2.5

0.64 mm

3.20 mm

16.00 mm

1.60 - 16.00

Save

Pre/Post

- ☐ OFF
- ☒ ON

Meas.Length

4.80 mm

Eval.Length

4.00 mm

Exit

Switch profile

•SJ-410

Measurement Conditions

Standard <input type="radio"/> JIS1982 <input type="radio"/> JIS1994 <input type="radio"/> JIS2001 <input checked="" type="radio"/> ISO1997 <input type="radio"/> ANSI <input type="radio"/> VDA <input type="radio"/> Free	Profile <input type="radio"/> P <input checked="" type="radio"/> R <input type="radio"/> W <input type="radio"/> DF <input type="radio"/> R-Motif <input type="radio"/> W-Motif	Filter <input type="radio"/> 2CR75 <input type="radio"/> PC75 <input checked="" type="radio"/> GAUSS <input type="radio"/> NONE	Lf <input type="radio"/> 0.25 <input type="radio"/> 0.8 <input checked="" type="radio"/> 2.5 <input type="radio"/> 8 <input type="radio"/> NONE mm	Lc <input type="radio"/> 0.08 <input type="radio"/> 0.25 <input checked="" type="radio"/> 0.8 <input type="radio"/> 2.5 <input type="radio"/> 8 <input type="radio"/> 25 mm	Ls <input checked="" type="radio"/> 2.5 <input type="radio"/> 8 <input type="radio"/> 25 <input type="radio"/> NONE um	M-Speed <input type="radio"/> 0.05 <input type="radio"/> 0.1 <input type="radio"/> 0.2 <input checked="" type="radio"/> 0.5 <input type="radio"/> 1.0 mm/s	Range <input checked="" type="radio"/> AUTO <input type="radio"/> 800 <input type="radio"/> 80 <input type="radio"/> 8 um
---	--	--	---	---	--	---	---

N <input type="radio"/> 1 <input type="radio"/> 6 <input type="radio"/> 11 <input type="radio"/> 16 <input type="radio"/> 2 <input type="radio"/> 7 <input type="radio"/> 12 <input type="radio"/> 17 <input type="radio"/> 3 <input type="radio"/> 8 <input type="radio"/> 13 <input type="radio"/> 18 <input type="radio"/> 4 <input type="radio"/> 9 <input type="radio"/> 14 <input type="radio"/> 19 <input type="radio"/> 5 <input type="radio"/> 10 <input type="radio"/> 15 <input type="radio"/> 20 <input checked="" type="radio"/> Opt Length <input type="text" value="5.00"/> mm 1.60 - 25.00 <div style="border: 2px solid red; padding: 2px; display: inline-block;">Save</div>	Motif-A L <input type="text" value="0.10"/> mm <div>Save</div> <input type="radio"/> L <input type="text" value="3.20"/> mm <input type="radio"/> 0.02 <input type="text" value="0.64"/> mm <input checked="" type="radio"/> 0.1 <input type="text" value="3.20"/> mm <input type="radio"/> 0.5 <input type="text" value="16.00"/> mm <input type="radio"/> 2.5 <input type="text" value="25.00"/> mm 1.60 - 25.00 <div>Save</div>	Motif-B L <input type="text" value="0.50"/> mm <div>Save</div> <input type="radio"/> L <input type="text" value="3.20"/> mm <input type="radio"/> 0.1 <input type="text" value="0.64"/> mm <input checked="" type="radio"/> 0.5 <input type="text" value="3.20"/> mm <input type="radio"/> 2.5 <input type="text" value="16.00"/> mm <input type="radio"/> 12.5 <input type="text" value="25.00"/> mm 1.60 - 25.00 <div>Save</div>	Pre/Post <input type="radio"/> OFF <input checked="" type="radio"/> ON Meas.Length <input type="text" value="15.00"/> mm Eval.Length <input type="text" value="4.00"/> mm
--	--	--	--

A

A

→

B

 Switch profile

✕

 Exit

4-3. Parameter customize Screen

- (1) Judge Rules can be selected from Maximum value rule / 16% rule / Mean rule value.

In SJ-310/410, standard deviation σ_1 , standard deviation σ_2 , standard deviation σ_3 can be selected as well.

- (2) All the parameters can be set or cancel at once.
- (3) All the tolerance judgement can be set or cancel at once.
- (4) Each parameter can be selected either ON or OFF individually.
- (5) Tolerance judgment of each parameter can be selected either ON or OFF individually.

However, tolerance judgment is not performed where tolerance limit value is “0”.

- (6) Tolerance judgement result of each parameter is displayed as below:

OK: Green / +NG: Red / -NG: Blue

- (7) In SJ-310/410, profile can be switched.

▪ SJ-210

Select parameter

(1) JudgeRules

☐ Max
 ☐ 16%
 ☒ Mean

(2) Parameter

Set All Cancel All

(3) Tol.Judge

Set All Cancel All

Tol.Judge	LowLimit	Up Limit		Tol.Judge	LowLimit	Up Limit		Tol.Judge	LowLimit	Up Limit		
Ra <input checked="" type="checkbox"/>	<input checked="" type="checkbox"/>	2.000	3.000	um	RDa <input type="checkbox"/>	<input type="checkbox"/>	0.000	0.000	Mr2 <input type="checkbox"/>	<input type="checkbox"/>	0.000	0.000 %
Rq <input checked="" type="checkbox"/>	<input checked="" type="checkbox"/>	2.000	3.000	um	RDq <input type="checkbox"/>	<input type="checkbox"/>	0.000	0.000	A1 <input type="checkbox"/>	<input type="checkbox"/>	0.000	0.000
Rz <input checked="" type="checkbox"/>	<input checked="" type="checkbox"/>	2.000	3.000	um	Rlr <input type="checkbox"/>	<input type="checkbox"/>	0.000	0.000	A2 <input type="checkbox"/>	<input type="checkbox"/>	0.000	0.000
Ry <input type="checkbox"/>	<input type="checkbox"/>	0.000	0.000	um	Rmr <input type="checkbox"/>	<input type="checkbox"/>	0.000	0.000 %	Vo <input type="checkbox"/>	<input type="checkbox"/>	0.000	0.000
Rp <input type="checkbox"/>	<input type="checkbox"/>	0.000	0.000	um	Rmr(c) <input type="checkbox"/>	<input type="checkbox"/>	0.000	0.000 %	K <input type="checkbox"/>	<input type="checkbox"/>	0.000	0.000 mm
Rv <input type="checkbox"/>	<input type="checkbox"/>	0.000	0.000	um	Rdc <input type="checkbox"/>	<input type="checkbox"/>	0.000	0.000 um	R <input type="checkbox"/>	<input type="checkbox"/>	0.000	0.000 um
R3z <input type="checkbox"/>	<input type="checkbox"/>	0.000	0.000	um	Htp <input type="checkbox"/>	<input type="checkbox"/>	0.000	0.000 um	Rx <input type="checkbox"/>	<input type="checkbox"/>	0.000	0.000 um
Rsk <input type="checkbox"/>	<input type="checkbox"/>	0.000	0.000	um	tp <input type="checkbox"/>	<input type="checkbox"/>	0.000	0.000 %	AR <input type="checkbox"/>	<input type="checkbox"/>	0.000	0.000 mm
Rku <input type="checkbox"/>	<input type="checkbox"/>	0.000	0.000	um	Rt <input type="checkbox"/>	<input type="checkbox"/>	0.000	0.000 um	W <input type="checkbox"/>	<input type="checkbox"/>	0.000	0.000 um
Rc <input type="checkbox"/>	<input type="checkbox"/>	0.000	0.000	um	Rz1max <input type="checkbox"/>	<input type="checkbox"/>	0.000	0.000 um	Wx <input type="checkbox"/>	<input type="checkbox"/>	0.000	0.000 um
RPc <input type="checkbox"/>	<input type="checkbox"/>	0.000	0.000 /cm		R3zm <input type="checkbox"/>	<input type="checkbox"/>	0.000	0.000 um	AW <input type="checkbox"/>	<input type="checkbox"/>	0.000	0.000 mm
RSm <input type="checkbox"/>	<input type="checkbox"/>	0.000	0.000	um	Rpm <input type="checkbox"/>	<input type="checkbox"/>	0.000	0.000 um	Wte <input type="checkbox"/>	<input type="checkbox"/>	0.000	0.000 um
S <input type="checkbox"/>	<input type="checkbox"/>	0.000	0.000	um	Rk <input type="checkbox"/>	<input type="checkbox"/>	0.000	0.000 um				
HSC <input type="checkbox"/>	<input type="checkbox"/>	0.000	0.000 /cm		Rpk <input type="checkbox"/>	<input type="checkbox"/>	0.000	0.000 um				
RzJIS <input type="checkbox"/>	<input type="checkbox"/>	0.000	0.000	um	Rvk <input type="checkbox"/>	<input type="checkbox"/>	0.000	0.000 um				
Rppi <input type="checkbox"/>	<input type="checkbox"/>	0.000	0.000	/E	Mr1 <input type="checkbox"/>	<input type="checkbox"/>	0.000	0.000 %				

(4)
(5)
(4)
(5)
(4)
(5)

Exit

•SJ-310/410

Select parameter

(1) JudgeRules

☐ OFF ☐ Max ☐ 16% ☒ Mean
☐ Std.Dev.1s ☐ Std.Dev.2s ☐ Std.Dev.3s

(2) Parameter

		LowLimit	Up Limit			LowLimit	Up Limit			LowLimit	Up Limit			
Ra	<input checked="" type="checkbox"/>	2.000	3.000	um	RDa	<input type="checkbox"/>	0.000	0.000		Rk	<input type="checkbox"/>	0.000	0.000	um
Rq	<input checked="" type="checkbox"/>	1.000	2.000	um	RDq	<input type="checkbox"/>	0.000	0.000		Rpk	<input type="checkbox"/>	0.000	0.000	um
Rz	<input checked="" type="checkbox"/>	2.000	3.000	um	RLa	<input type="checkbox"/>	0.000	0.000	mm	Rvk	<input type="checkbox"/>	0.000	0.000	um
Ry	<input type="checkbox"/>	0.000	0.000	um	RLq	<input type="checkbox"/>	0.000	0.000	mm	Mr1	<input type="checkbox"/>	0.000	0.000	%
Rp	<input type="checkbox"/>	0.000	0.000	um	RLo	<input type="checkbox"/>	0.000	0.000	mm	Mr2	<input type="checkbox"/>	0.000	0.000	%
Rv	<input type="checkbox"/>	0.000	0.000	um	Rlr	<input type="checkbox"/>	0.000	0.000		A1	<input type="checkbox"/>	0.000	0.000	
R3z	<input type="checkbox"/>	0.000	0.000	um	Rmr	<input type="checkbox"/>	0.000	0.000	%	A2	<input type="checkbox"/>	0.000	0.000	
Rsk	<input type="checkbox"/>	0.000	0.000		Rmr(c)	<input type="checkbox"/>	0.000	0.000	%	Vo	<input type="checkbox"/>	0.000	0.000	
Rku	<input type="checkbox"/>	0.000	0.000		Rdc	<input type="checkbox"/>	0.000	0.000	um	K	<input type="checkbox"/>	0.000	0.000	mm
Rc	<input type="checkbox"/>	0.000	0.000	um	Htp	<input type="checkbox"/>	0.000	0.000	um	R	<input type="checkbox"/>	0.000	0.000	um
RPc	<input type="checkbox"/>	0.000	0.000	/cm	tp	<input type="checkbox"/>	0.000	0.000	%	Rx	<input type="checkbox"/>	0.000	0.000	um
RSm	<input type="checkbox"/>	0.000	0.000	um	Rt	<input type="checkbox"/>	0.000	0.000	um	AR	<input type="checkbox"/>	0.000	0.000	mm
S	<input type="checkbox"/>	0.000	0.000	um	Rz1max	<input type="checkbox"/>	0.000	0.000	um	W	<input type="checkbox"/>	0.000	0.000	um
HSC	<input type="checkbox"/>	0.000	0.000	/cm	R3zm	<input type="checkbox"/>	0.000	0.000	um	Wx	<input type="checkbox"/>	0.000	0.000	um
RzJIS	<input type="checkbox"/>	0.000	0.000	um	Rpm	<input type="checkbox"/>	0.000	0.000	um	AW	<input type="checkbox"/>	0.000	0.000	mm
Rppi	<input type="checkbox"/>	0.000	0.000	/E						Wte	<input type="checkbox"/>	0.000	0.000	um

(4) A

(5)

(7)

A↔B
Switch profile

(4)

(5)

Exit

5

UNINSTALLATION

This section describes how to uninstall.

- (1) Select [Start], [Settings], and [Control Panel] menus in this order to open the control panel, and then double-click the [Add/Remove Programs] icon.
- (2) Select an old version program from the list of the [Install/Uninstall] tab and then click the [Add/Remove...] button.
- (3) A message to confirm whether to remove is displayed. Click the [Yes] button.

6

OPERATING ENVIRONMENT AND OTHERS

This section describes the operating environment, etc.

(1) Operation verified environment

OS	WindowsXP-SP3 / Vista / Windows 7/8/10 (32Bit/64Bit)
Excel	Excel 2000 / 2002 / 2003 / 2007 / 2010 / 2013
Display	1024 X 768 dots or more, high color (16 bits) or better

-
- NOTE**
- For Windows Vista Business or later / Windows7/8/10, it is required to run Surftest SJ USB Communication as an administrator.
 - It may not operate properly, if the security level of the Excel is high.
-

- (1) Windows is a trademark of Microsoft Corporation.
- (2) Excel is a registered trademark of Microsoft Corporation.
- (3) Other corporate and product names that appear in this manual are generally their trademarks or registered trademarks.

MEMO

SERVICE NETWORK

Europe

Mitutoyo Europe GmbH

Borsigstrasse 8-10, 41469 Neuss, GERMANY
TEL:49(2137)102-0 FAX:49(2137)102-351

Mitutoyo CTL Germany GmbH

Neckarstrasse 1/8, 78727 Oberndorf, GERMANY
TEL:49(7423) 8776-0 FAX:49(7423)8776-99

KOMEG Industrielle Messtechnik GmbH

Zum Wasserwerk 3, 66333 Völklingen, GERMANY
TEL: 49(6898)91110 FAX: 49(6898)9111100

Germany

Mitutoyo Deutschland GmbH

Borsigstrasse 8-10, 41469 Neuss, GERMANY
TEL:49(2137)102-0 FAX:49(2137)86 85

M3 Solution Center Hamburg

Tempowerkring 9-im HIT-Technologiepark 21079 Hamburg, GERMANY

TEL:49(40)791894-0 FAX:49(40)791894-50

M3 Solution Center Berlin

Paradiesstrasse 208, 12526 Berlin, GERMANY
TEL:49(30)2611 267 FAX:49(30)26 29 209

M3 Solution Center Eisenach

im tbz Eisenach, Heinrich-Ehrhardt-Platz, 99817 Eisenach, GERMANY

TEL:49(3691)88909-0 FAX:49(3691)88909-9

M3 Solution Center Ingolstadt

Marie-Curie-Strasse 1a, 85055 Ingolstadt, GERMANY
TEL:49(841)954920 FAX:49(841)9549250

M3 Solution Center Leonberg GmbH

Steinbeisstrasse 2, 71229 Leonberg, GERMANY
TEL:49(7152)6080-0 FAX:49(7152)608060

Mitutoyo-Messgeräte Leonberg GmbH

Heidenheimer Strasse 14 71229 Leonberg, GERMANY
TEL:49(7152)9237-0 FAX:49(7152)9237-29

U.K.

Mitutoyo (UK) Ltd.

Joule Road, West Point Business Park, Andover, Hampshire SP10 3UX, UNITED KINGDOM

TEL:44(1264)353123 FAX:44(1264)354883

M3 Solution Center Coventry

Unit6, Banner Park, Wickmans Drive, Coventry, Warwickshire CV4 9XA, UNITED KINGDOM

TEL:44(2476)426300 FAX:44(2476)426339

M3 Solution Center Halifax

Lowfields Business Park, Navigation Close, Elland, West Yorkshire HX5 9HB, UNITED KINGDOM

TEL:44(1422)375566 FAX:44(1422)328025

M3 Solution Center East Kilbride

The Baird Bulding, Rankine Avenue, Scottish Enterprise Technology Park, East Kilbride G75 0QF, UNITED KINGDOM
TEL:44(1355)581170 FAX:44(1355)581171

France

Mitutoyo France

Paris Nord 2-123 rue de la Belle Etoile, BP 59267 ROISSY EN FRANCE 95957 ROISSY CDG CEDEX, FRANCE

TEL:33(1) 49 38 35 00 FAX:33(1) 48 63 27 70

M3 Solution Center LYON

Parc Mail 523, cours du 3ème millénaire, 69791 Saint-Priest, FRANCE

TEL:33(1) 49 38 35 70 FAX:33(1) 49 38 35 79

M3 Solution Center STRASBOURG

Parc de la porte Sud, Rue du pont du péage, 67118

Geispolsheim, FRANCE

TEL:33(1) 49 38 35 80 FAX:33(1) 49 38 35 89

M3 Solution Center CLUSES

Espace Scionzier 480 Avenue des Lacs, 74950 Scionzier, FRANCE

TEL:33(1) 49 38 35 90 FAX:33(1) 49 38 35 99

M3 Solution Center TOULOUSE

Aeroparc Saint-Martin, ZAC de Saint Martin du Touch, 12 rue de Caulet, Cellule B08, 31300 TOULOUSE, FRANCE

TEL:33(5)82 95 60 69

Italy

MITUTOYO ITALIANA S.r.l.

Corso Europa, 7 - 20020 Lainate (MI), ITALY
TEL: 39(02)935781 FAX:39(02)9373290-93578255

M3 Solution Center TORINO

Via Brandizzo, 133/F - 10088 Volpiano (TO), ITALY
TEL:39(0)11 9123995 FAX:39(0)11 9953202

M3 Solution Center CHIETI

Contrada Santa Calcagna - 66020 Rocca S. Giovanni (CH), ITALY

TEL/FAX:39(0872)709217

Netherlands

Mitutoyo Nederland B.V.

Storkstraat 40, 3905 KX Veenendaal, THE NETHERLANDS
TEL:31(0)318-534911 FAX:31(0)318-534811

Mitutoyo Research Center Europe B.V.

De Rijn 18, 5684 PJ Best, THE NETHERLANDS
TEL:31(0)499-320200 FAX:31(0)499-320299

Belgium

Mitutoyo Belgium N.V.

Hogenakkerhoek straat 8, 9150 Kruibeke, BELGIUM
TEL:32(0)3-2540444 FAX:32(0)3-2540445

Sweden

Mitutoyo Scandinavia AB

Släntvägen 6, 194 54 Upplands Väsby, SWEDEN
TEL:46(0)8 594 109 50 FAX:46(0)8 590 924 10

M3 Solution Center Alingsas

Kristineholmsvägen 26, 441 39 Alingsas, SWEDEN
TEL:46(0)8 594 109 50 FAX:46(0)322 63 31 62

M3 Solution Center Värnamo

Storgatsbacken 9, 331 30 Värnamo, SWEDEN
TEL:46(0)8 594 109 50 FAX:46(0)370 463 34

Switzerland

Mitutoyo Schweiz AG

Steinackerstrasse 35, 8902 Urdorf, SWITZERLAND
TEL:41(0)447361150 FAX:41(0)447361151

Poland

Mitutoyo Polska Sp.z o.o.

Ul.Graniczna 8A 54-610 Wroclaw,POLAND
TEL:48(71)354 83 50 FAX:48(71)354 83 55

Czech Republic

Mitutoyo Cesko, s.r.o.

Dubska 1626, 415 01 Teplice, CZECH REP
TEL:420-417-579-866 FAX:420-417-579-867

Hungary

Mitutoyo Hungária Kft.

Záhony utca 7, D-building /Groundfloor, H-1031 Budapest, Hungary

TEL:36(1)2141447 FAX:36(1)2141448

SERVICE NETWORK

Romania

Mitutoyo Romania SRL

1A Drumul Garii Odai Street, showroom, Ground Floor,
OTOPENI-ILFOV, ROMANIA
TEL:40(0)311012088 FAX:40(0)311012089

Russian Federation

Mitutoyo RUS LLC

13 Sharikopodshipnikovskaya, bld.2, 115088 Moscow,
RUSSIAN FEDERATION
TEL:(7)495 7450 752 FAX:(7)495 745 0752

Finland

Mitutoyo Scandinavia AB Finnish Branch

Viherkiitäjä 2A, FI-33960, Pirkkala, Finland
TEL: +358 207 929 640

Austria

Mitutoyo Austria GmbH

Johann Roithner Straße 131 A-4050 Traun
TEL:+43(0)7229/23850 FAX:+43(0)7229/23850-90

Singapore

Mitutoyo Asia Pacific Pte. Ltd.

Head office / M3 Solution Center

24 Kallang Avenue, Mitutoyo Building, SINGAPORE 339415
TEL:(65)62942211 FAX:(65)62996666

Malaysia

Mitutoyo (Malaysia) Sdn. Bhd.

Kuala Lumpur Head Office / M3 Solution Center

Mah Sing Intergrated Industrial Park, 4, Jalan Utarid U5/14,
Section U5, 40150 Shah Alam, Selangor, MALAYSIA
TEL:(60)3-78459318 FAX:(60)3-78459346

Penang Branch office / M3 Solution Center

No.30, Persiaran Mahsuri 1/2, Sunway Tunas, 11900 Bayan
Lepas, Penang, MALAYSIA
TEL:(60)4-6411998 FAX:(60)4-6412998

Johor Branch office / M3 Solution Center

No. 70, Jalan Molek 1/28, Taman Molek, 81100 Johor Bahru,
Johor, MALAYSIA
TEL:(60)7-3521626 FAX:(60)7-3521628

Thailand

Mitutoyo(Thailand)Co., Ltd.

Bangkok Head Office / M3 Solution Center

76/3-5, Chaengwattana Road, Kwaeng Anusaowaree, Khet
Bangkaen, Bangkok 10220, THAILAND
TEL:(66)2-521-6130 FAX:(66)2-521-6136

Cholburi Branch / M3 Solution Center

7/1, Moo 3, Tambon Bowin, Amphur Sriracha, Cholburi 20230,
THAILAND
TEL:(66)3-834-5783 FAX:(66)3-834-5788

Amata Nakorn Branch / M3 Solution Center

700/199, Moo 1, Tambon Bankao, Amphur Phanthong, Cholburi
20160, THAILAND
TEL:(66)3-846-8976 FAX:(66)3-846-8978

Indonesia

PT. Mitutoyo Indonesia

Head Office / M3 Solution Center

Jalan Sriwijaya No.26 Desa cibatu Kec. Cikarang Selatan Kab.
Bekasi 17530, INDONESIA
TEL: (62)21-2962 8600 FAX: (62)21-2962 8604

Vietnam

Mitutoyo Vietnam Co., Ltd

Hanoi Head Office / M3 Solution Center

No. 07-TT4, My Dinh - Me Tri Urban Zone, My Dinh 1 Ward,
Nam Tu Liem District, Hanoi, VIETNAM
TEL:(84)4-3768-8963 FAX:(84)4-3768-8960

Ho Chi Minh City Branch Office / M3 Solution Center

31 Phan Xich Long Street, Ward 2, Phu Nhuan District, Ho Chi
Minh City, VIETNAM
TEL:(84)8-3517-4561 FAX:(84)8-3517-4582

Mitutoyo Philippines, Inc.

Unit 2103, Bldg 2 GMV Center, 107 North Main Avenue,
Laguna Technopark, Binan, Laguna 4028, Philippines
TEL:(63)49 544 0272 FAX:(63)49 544 0272

India

Mitutoyo South Asia Pvt. Ltd.

Head Office / M3 Solution Center

C-122, Okhla Industrial Area, Phase-I, New Delhi-110 020,
INDIA
TEL:91(11)2637-2090 FAX:91(11)2637-2636

MSA Gurgaon technical center

Plot No. 65, Phase-IV, Udyog Vihar, Gurgaon – 122016
TEL : 91 (0124) – 2340294

Mumbai Region Head office

303, Sentinel Hiranandani Business Park Powai, Mumbai-400
076, INDIA
TEL:91(22)2570-0684, 837, 839 FAX:91(22)2570-0685

Pune Office / M3 Solution Center

G2/G3, Pride Kumar Senate, F.P. No. 402 Off. Senapati Bapat
Road, Pune-411 016, INDIA
TEL:91(20)6603-3643, 45, 46 FAX:91(20)6603-3644

Vadodara office

S-1&S-2, Olive Complex, Nr. Haveli, Nizampura, Vadodara-390
002, INDIA
TEL: 91 265-2750781 FAX: (91) 265-2750782

Bengaluru Region Head office / M3 Solution Center

No. 5, 100 Ft. Road, 17th Main, Koramangala, 4th Block,
Bengaluru-560 034, INDIA
TEL:91(80)2563-0946, 47, 48 FAX:91(80)2563-0949

Chennai Office / M3 Solution Center

No. 624, Anna Salai Teynampet, Chennai-600 018, INDIA
TEL:91(44)2432-8823, 24, 27, 28 FAX:91(44)2432-8825

Kolkata Office

Unit No. 1208,Om Tower, 32,J.L..Nehru Road, Kolkata-700 071,
INDIA
Tel: 91 33-22267088/40060635 Fax: (91) 33-22266817

Taiwan

Mitutoyo Taiwan Co., Ltd. / M3 Solution Center Taipei

4F., No.71, Zhouzi St., Neihu Dist.,Taipei City 114, TAIWAN
(R.O.C.)
TEL:886(2)5573-5902 FAX:886(2)8752-3267

Taichung Branch / M3 Solution Center Taichung

1F., No.758, Zhongming S. Rd., South Dist., Taichung City 402,
TAIWAN(R.O.C.)
TEL:886(4)2262-9188 FAX:886(4) 2262-9166

Kaohsiung Branch / M3 Solution Center Kaohsiung

1F., No.31-1, Haibian Rd., Lingya Dist., Kaohsiung City 802,
Taiwan (R.O.C.)
TEL:886(7)334-6168 FAX:886(7)334-6160

South Korea

Mitutoyo Korea Corporation

Head Office / M3 Solution Center

(Sanbon-Dong, Geumjeong High View Build.), 6F, 153-8, Ls-
Ro, Gunpo-Si, Gyeonggi-Do, 15808 KOREA
TEL:82(31)361-4200 FAX:82(31)361-4202

Mitutoyo Corporation

20-1, Sakado 1-chome, Takatsu-ku, Kawasaki, Kanagawa 213-8533,
Japan

Phone: 81-44-813-8230 Fax: 81-44-813-8231

Home page: <http://www.mitutoyo.co.jp/global.html>